

Reykjavík ski·hotel



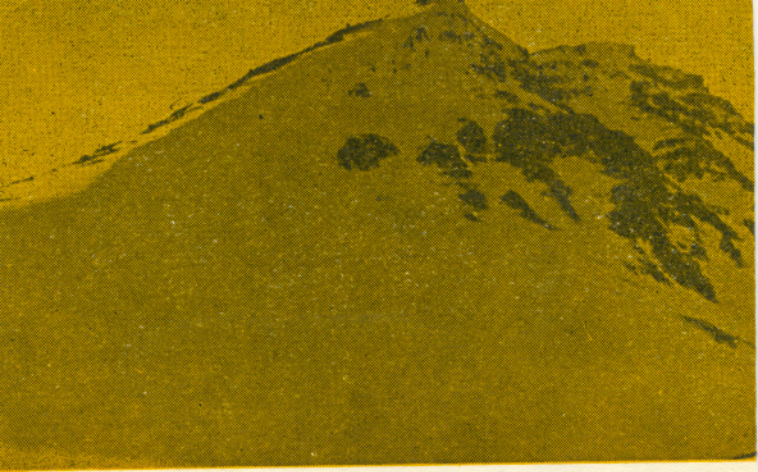
NEW ICELANDIC MOUNTAIN
RESORT AND SPRING - SKIING
AND SUMMER HOLIDAYS



ICELANDAIR

FLUGFÉLAG ÍSLANDS H.F.

Flies you in a few hours to
Reykjavík, center of Iceland's
domestic air network.



The Akureyri Ski Hotel was opened at Easter in 1963 and meets a long-felt need not only in North Iceland but in the country generally. Apart from the ski-lodges near Reykjavik and in Isafjord it is the only hotel of its kind in Iceland. Originally intended primarily for local skiers in winter, it proved so popular with visitors in summer too that it was decided to keep it open throughout the

year. The hotel is operated by the Akureyri Ski Council in conjunction with the Akureyri municipality, and is managed by an experienced hotelier. It is really an all-seasons mountain resort, no less convenient for summer holidays than for winter sports.

THE LOCATION

At an altitude of 500 metres (1600 feet) the hotel

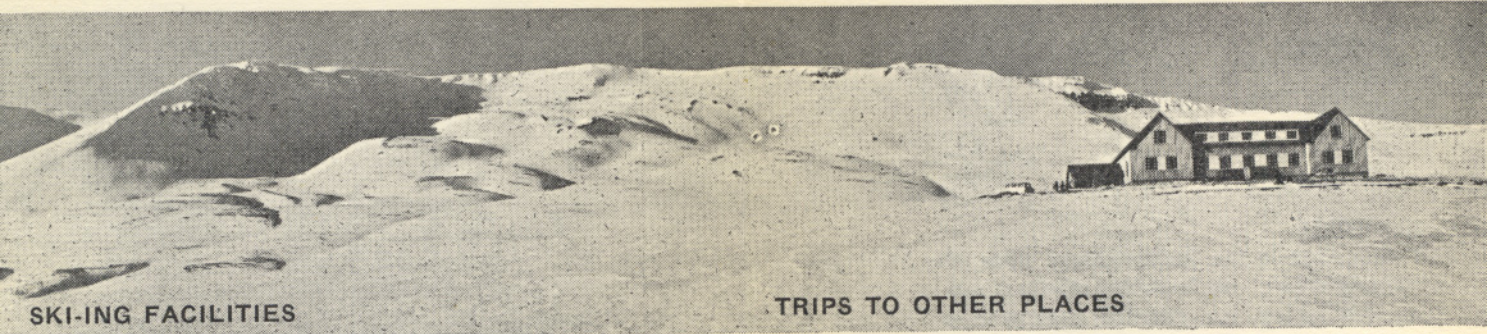


commands a splendid and uninterrupted view of the surrounding peaks and overlooks the picturesque Eyjafjörður, at the head of which stands Akureyri. It is connected by a good road with Akureyri, the chief administrative and communications centre of North Iceland, the journey taking 20 minutes by car and about an hour on foot. Close by are Kerling (1538 m), the highest mountain in North Iceland, and several other peaks nearly as high. Two small glaciers are also quite near, while just below the hotel is the valley of the river Glerá, which is of particular interest to botanists and geologists.

possible. Ski instruction is available and skis can sometimes be had on loan.

HIKING AND CLIMBING

This is an ideal centre for mountain walks or climbs — gentle or strenuous according to taste — during summer. Information about the area and suggestions for day outings can be obtained from the hotel staff. The Icelandic air is positively sparkling and — like the mountain water — some of the purest in the world. Moreover, you have the advantage of perpetual daylight from May to August.



SKI-ING FACILITIES

TRIPS TO OTHER PLACES

The best ski-ing season is March/May (and even early June), when snow usually lies thickly in the immediate vicinity of the hotel, the annual ski competitions being, in fact, normally held there in April. Easter is always a busy and popular time. It is also possible to ski at the highest levels throughout the summer, though this means a prior climb of $1\frac{1}{2}$ —2 hours.

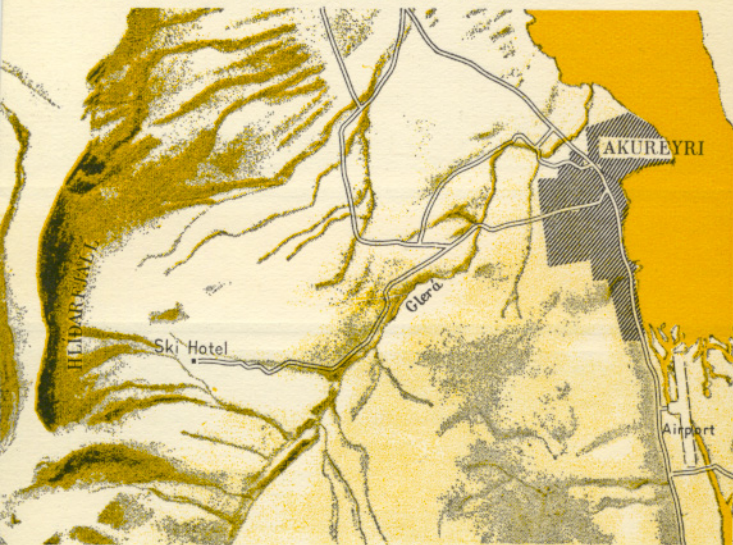
There are gentle slopes for the beginner as well as vast, free expanses for the advanced skier. A simple but practical ski lift will take you quite a long way up the slopes, and it is planned to improve this facility as soon as

From the hotel you can conveniently make trips by bus or private car to several interesting places in North Iceland such as Lake Mývatn (sulphur springs, dramatic volcanic scenery, fantastic bird life), Dettifoss (gigantic waterfall plunging 200 feet into a rocky chasm), Húsavík (charming little fishing town, where one of the first Viking explorers made his home), Askja (famous volcano that last erupted in 1961). Special trips can be arranged to the glaciers and lava regions of the interior of Iceland. And why not try a ride on the friendly, sure-footed Icelandic pony?

AKUREYRI

With a population of 9,000 Akureyri is the second largest town in Iceland, and its beautiful setting in the fiord, its gay summer flowers and tidy streets are much admired by visitors. It has a large, well-heated outdoor swimming pool and a golf course for outdoor sport.

Skating is often possible in spring, sea-angling in summer. The fascinating island of Grimsey with its 70 inhabitants divided by the Arctic Circle passing through their midst is within easy reach by air or sea. For evening entertainment Akureyri can offer several excellent cinemas, cafes and restaurants (often with dancing).



THE HOTEL

Though not in the Swiss luxury class, the Ski Hotel is extremely clean, comfortable, modern and well-equipped. You will enjoy its natural, unsophisticated yet gay atmosphere, and can be sure of a friendly, Icelandic welcome.

There is a choice of bedrooms for 2 or 4 persons (some with hot and cold running water) and dormitories. There are ample shower and toilet facilities as well as efficient central heating throughout the building. Prices are reasonable, particularly as the up-to-date restaurant for

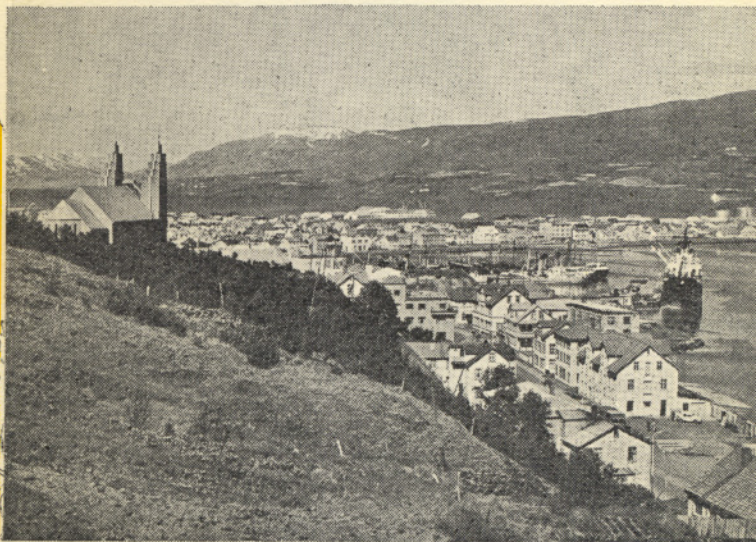
90 persons is self-service and there is no tipping or surcharge. Language presents no difficulty. A cosy sitting-room is available, while there are facilities also for various indoor games.

The hotel is also open for meals and refreshments to the casual visitor who does not wish to make a night

stop, and is well worth visit if you are just passing through Akureyri.

COMMUNICATIONS WITH REYKJAVIK

Akureyri is at the northern end of the main motor road from Reykjavik and is also a midway point between the latter and the east of Iceland. ICELANDAIR operates



frequent air services, the flight between Reykjavik and Akureyri taking just over an hour. Regular bus services operate during summer. Those who like a sea voyage can make the trip on one of the regular coastal sailings in fast, modern passenger vessels that also call at most of the intermediate fishing ports. By PETER KIDSON.

Issued by Icelandair - Flugfélag Íslands hf.